



SKATEPARKS & PUBLIC SPACES

# Skate Space Design Proposal - Alice Park For Bath & North East Somerset Council



A R T I S T I C   E N G I N E E R I N G

Canvas Spaces Limited | 12 Dowry Square, Hotwells, Bristol BS8 4SH, United Kingdom.  
Registered Co. in England & Wales no. 8723592 | VAT Reg. no. 172 5172 16  
All content © Canvas Spaces Limited

# Contents

<b>Foreword .....</b>	<b>2</b>
<b>Copyright.....</b>	<b>3</b>
<b>Five reasons... ..</b>	<b>4</b>
<b>Design Proposal.....</b>	<b>5</b>
<b>Points of Interest.....</b>	<b>7</b>
Unobtrusive to surrounding landscape [01] .....	7
Landscaped mounding [02], [03] .....	7
Designed to meet market research results for East Bath [04] .....	7
<b>Additional Points of Interest .....</b>	<b>9</b>
Beginner's break-out area [01] .....	9
Additional, unobtrusive forms, to meet market research [02].....	9
Landscaped mounding [03], [04] .....	9
<b>Contact us .....</b>	<b>11</b>

# Foreword

This document has been produced to show various design options based on initial local community consultation, as carried out by Bath & North East Somerset Council. The criteria for this proposal is not only to produce a skatepark design that the local community will cherish and use for many years to come, but to be appealing to passive users and spectators alike through carefully space planned dimensions and positioning of forms.

The proposed skatepark will be constructed with a float-finish concrete riding surface. This not only ensures the best riding surface for the end-user and appropriate structural integrity, but also mitigates any noise created from the skatepark's use. The omission of steel joints, seen in skateparks of yesteryear, and the inclusion of CANVAS' structural design methods will add to this skatepark's fitting into the existing area without disruption.

With the evident vision of the local community, the enclosed design represents CANVAS' interpretation of a scheme that will compliment the larger facility located in Royal Victoria Park by being low-level, differing in design and bespoke for its specific proposed plot.

Many thanks



**John Flood**  
Design Director

**Canvas Spaces Limited**

# Copyright

This document and its supporting drawings and information is copyright of CANVAS Spaces Limited. Should you require reproduction or use of the contents of this document, in whole or in part, permission from CANVAS must be sought beforehand. Thank you.

# Five reasons...

That a skatepark in Alice Park will be an asset to the local community



As one of the fastest growing activities for young people, globally, skateboarding (and BMX riding) have become hugely popular past times. Physical exercise, mental well-being and gaining social and developmental skills are all by-products of the associated sports of skateparks.



Royal Victoria Park, Bath.

The majority of skateboarding and other wheeled sports' injuries happen outside skateparks. The most common injuries are falls due to surface irregularities and collisions with motor vehicles or pedestrians. Providing access to safe, designated spaces to pursue an active lifestyle ensures safe progression within the associated sports .

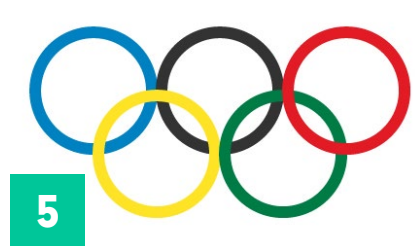


Royal Victoria Park, Bath. Ph. Tom Sparey

Skateparks attract users of all ages and abilities, plus families and spectators.



The location of the proposed plot being adjacent to the existing playground will allow parents/guardians to visit Alice park with both younger and older children. Currently the facilities are widely spread and not inclusive of non-team sports.



Legacy: Skateboarding has recently seen its inclusion in the 2020 Olympics (BMXing is already in the Olympics). Future Olympic stars of the UK will start their journey and be encouraged through facilities such as that proposed for Alice Park.

# Design Proposal





**Option 01**



Low -level  
'Street-plaza'

**Approx Size:** 36m x 6m

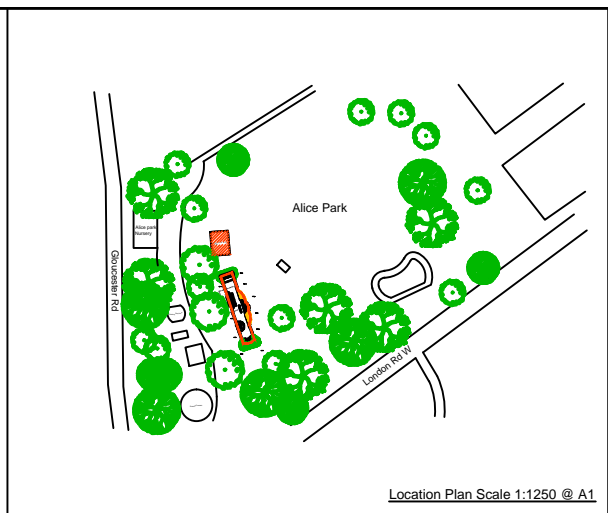
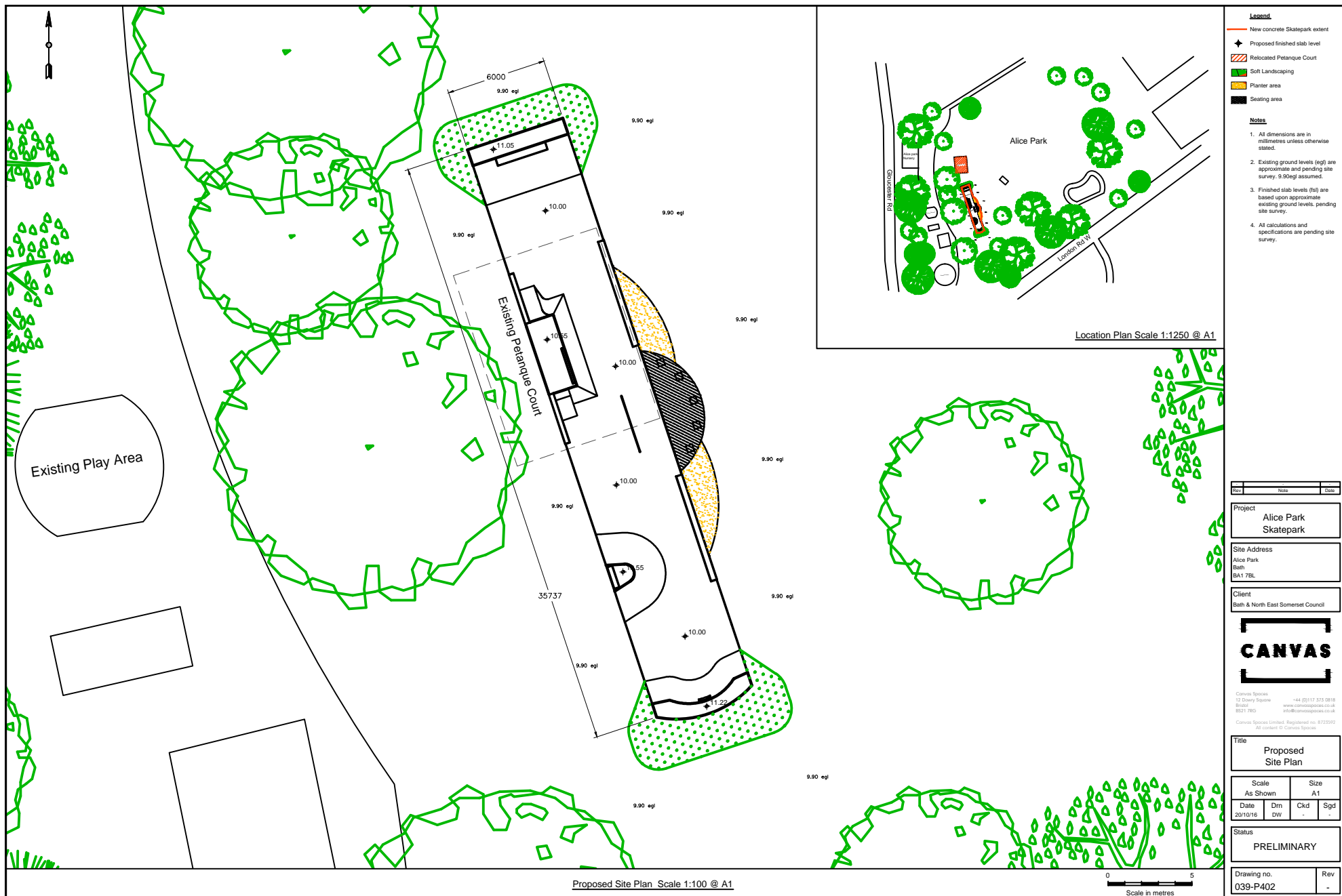
**Approximate Budget:** £97,000

**Materials:** Float finish concrete;  
Integrally coloured concrete;  
anti-graffiti paint; seating.









**Legend**

- New concrete Skatepark extent
- Proposed finished slab level
- Relocated Petanque Court
- Soft Landscaping
- Planter area
- Seating area

**Notes**

- All dimensions are in millimetres unless otherwise stated.
- Existing ground levels (egl) are approximate and pending site survey. 9.90egl assumed.
- Finished slab levels (fsl) are based upon approximate existing ground levels, pending site survey.
- All calculations and specifications are pending site survey.

Rev	Note	Date

**Project**  
Alice Park Skatepark

**Site Address**  
Alice Park  
Bath  
BA1 7BL

**Client**  
Bath & North East Somerset Council

**CANVAS**

Canvas Spaces  
17 Dorey Square  
Bristol  
BS1 7RS  
+44 (0)117 373 0808  
www.canvaspaces.co.uk  
info@canvaspaces.co.uk

Canvas Spaces Limited. Registered no. 6722592  
All content © Canvas Spaces

**Title**  
Proposed Site Plan

Scale	Size
As Shown	A1

Date	Dm	Ckd	Sgd
20/10/16	DW	-	-

**Status**  
PRELIMINARY

Drawing no.	Rev
039-P402	-



Option 01

## Points of Interest

### **Unobtrusive to surrounding landscape [01]**

With a mixture of low level features and soft landscaping the skatepark can easily blend into its surrounding environment whilst complimenting it. This is what we strive for at CANVAS: Creating not only a fantastic skatepark, in conjunction with the local community, but to also make an aesthetically pleasing community space that everyone can enjoy.

### **Landscaped mounding [02], [03]**

Landscaped mounding will be applied to any external wall features. These forms blend raised walls into the surrounding environment whilst retaining the structure's aesthetic value.

### **Designed to meet market research results for East Bath [04]**

Using market research results, carried out by Bath & North East Somerset Council, to inform the design, the current set of concepts all show a layout that meets the aspirations of the local community in terms of: Variety; syle; aesthetics; layout and space planning.





**Option 02**



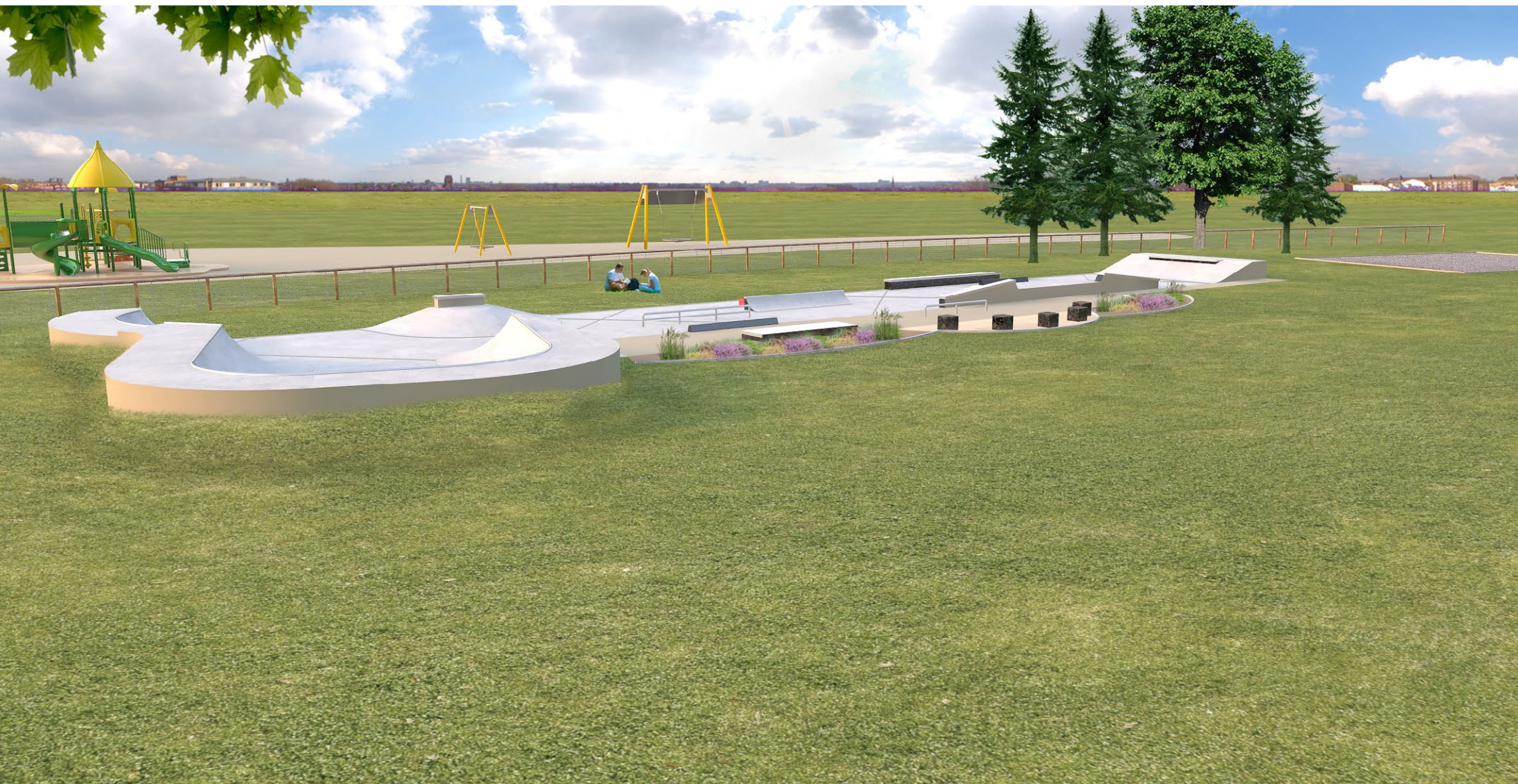
Low -level  
'Street-plaza'  
with transitioned  
elements, bowl &  
Beginner's area.

**Approx Size:** 38m x 10m

**Approx. Budget:**  
£97,000+£20,000

**Materials:** Float finish concrete;  
Integrally coloured concrete;  
anti-graffiti paint; seating.











**Option 02**

## Additional Points of Interest

### **Beginner's break-out area [01]**

The beginner's break-out area is a partially separated space of the skatepark with low-level obstacles where beginners have the space to learn at their own pace with plenty of room, using easier-to-ride features. This also benefits the more experienced user, allowing for a warm-up period on smaller, easier features.

### **Additional, unobtrusive forms, to meet market research [02]**

Additional elements have been incorporated from market research findings, such as the low-level bowl and 'Hubba ledges.' These have been added in a manner that does not change the fundamental design in terms of height or general layout.

### **Landscaped mounding [03], [04]**

Landscaped mounding will be applied to any external wall features. These forms blend raised walls into the surrounding environment whilst retaining the structure's aesthetic value. The added forms are also backed with landscaped material, further blending the skatepark into the surrounding area.



# Contact us

Follow us on social media for updates  
of parks, projects and events

**Canvas Spaces Limited**

12 Dowry Square

Bristol

United Kingdom

BS8 4SH

t. +44 (0)117 373 0818

e. [info@canvasspaces.co.uk](mailto:info@canvasspaces.co.uk)

[www.canvasspaces.co.uk](http://www.canvasspaces.co.uk)

[www.instagram.com/canvas\\_sps](https://www.instagram.com/canvas_sps)



[www.facebook.com/canvas.spaces](https://www.facebook.com/canvas.spaces)

